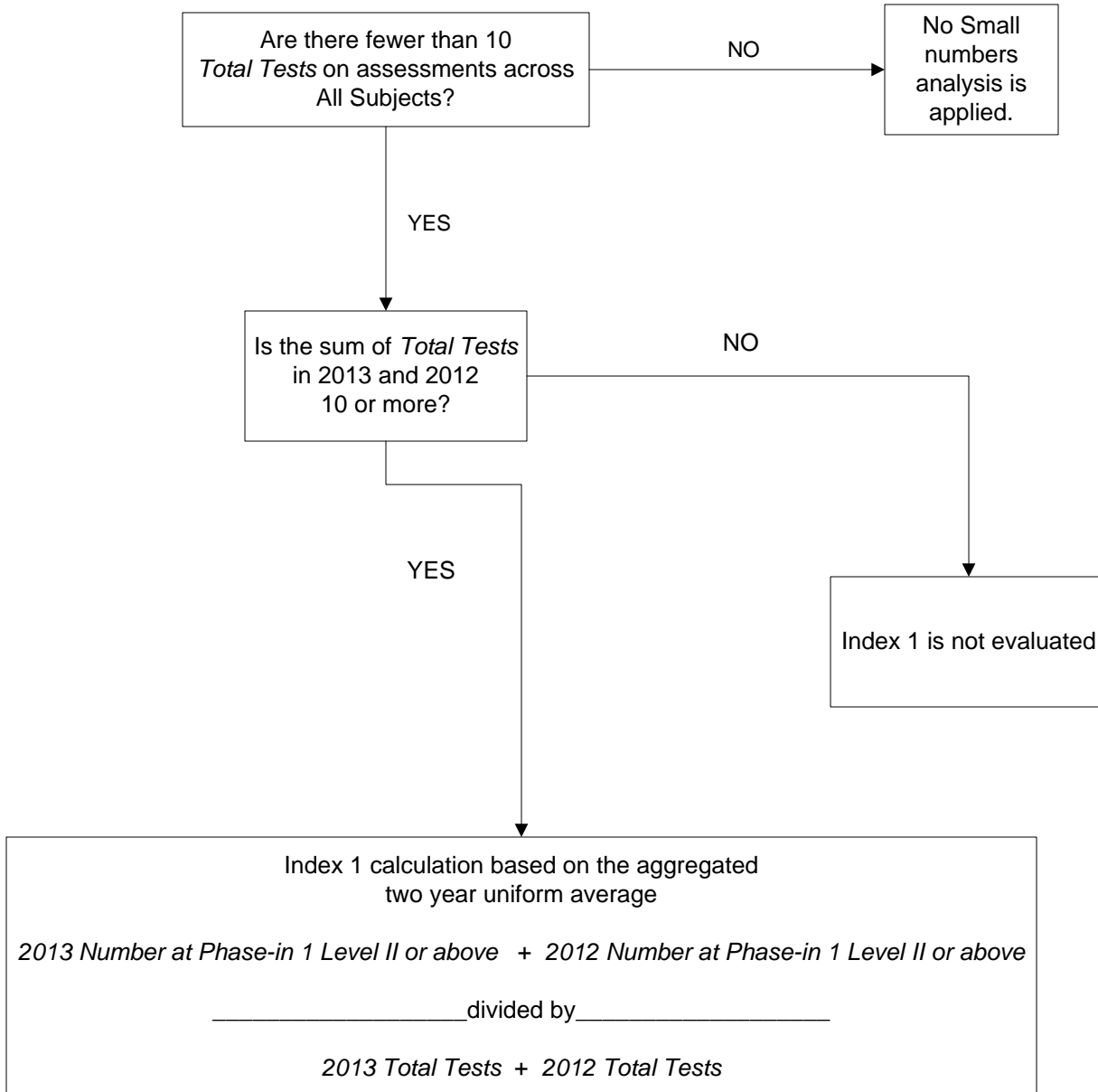


Small Numbers Analysis Index 1: Student Achievement

ALL DISTRICT AND CAMPUS TYPES

Small numbers analysis is applied if the *Total Tests* on assessments across **All Subjects** in 2013 is fewer than 10.



Small Numbers Analysis Index 2: Student Progress

ALL DISTRICT AND CAMPUS TYPES

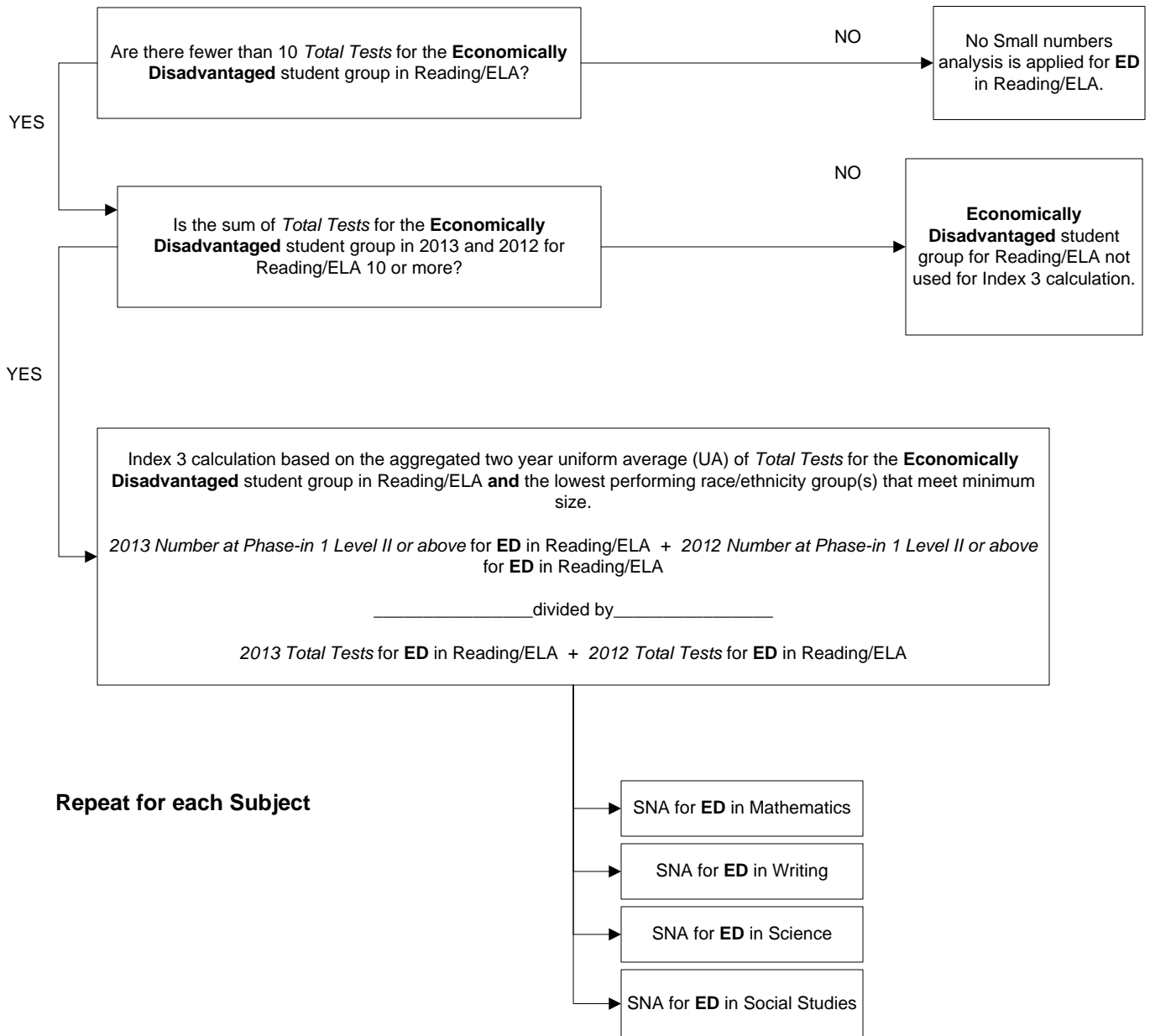
Two-year averages for Index 2 cannot be calculated because only one year of data for student growth is available in 2013.

Small Numbers Analysis Index 3: Closing Performance Gaps

ALL DISTRICT AND CAMPUS TYPES

Small numbers analysis (SNA) is applied for the **Economically Disadvantaged (ED)** student group by subject (Reading/ELA, Mathematics, Writing, Science, and Social Studies) if there are fewer than 10 *Total Tests*.

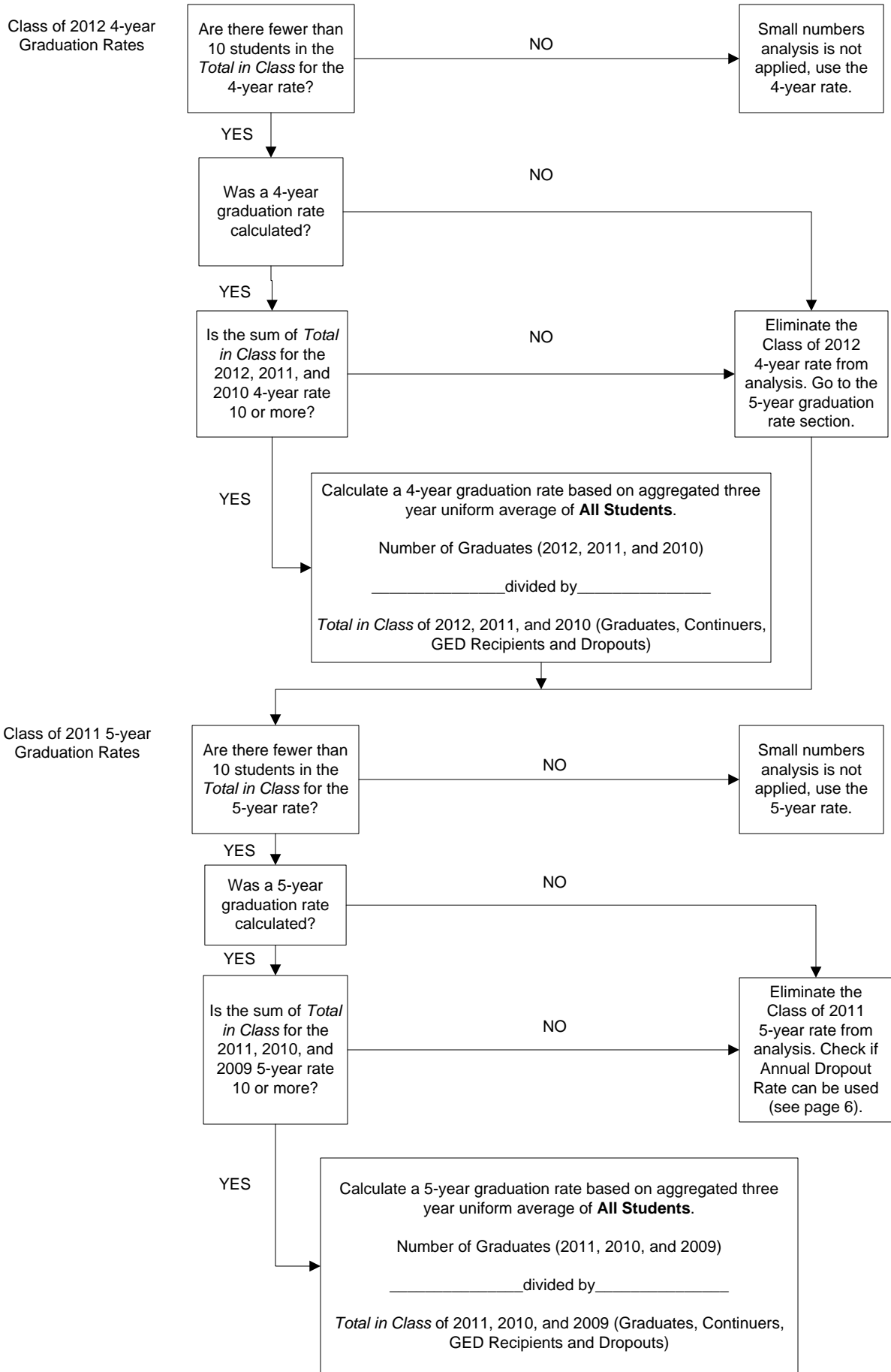
Reading/ELA



Small Numbers Analysis Index 4: Postsecondary Readiness

STANDARD DISTRICTS AND CAMPUSES

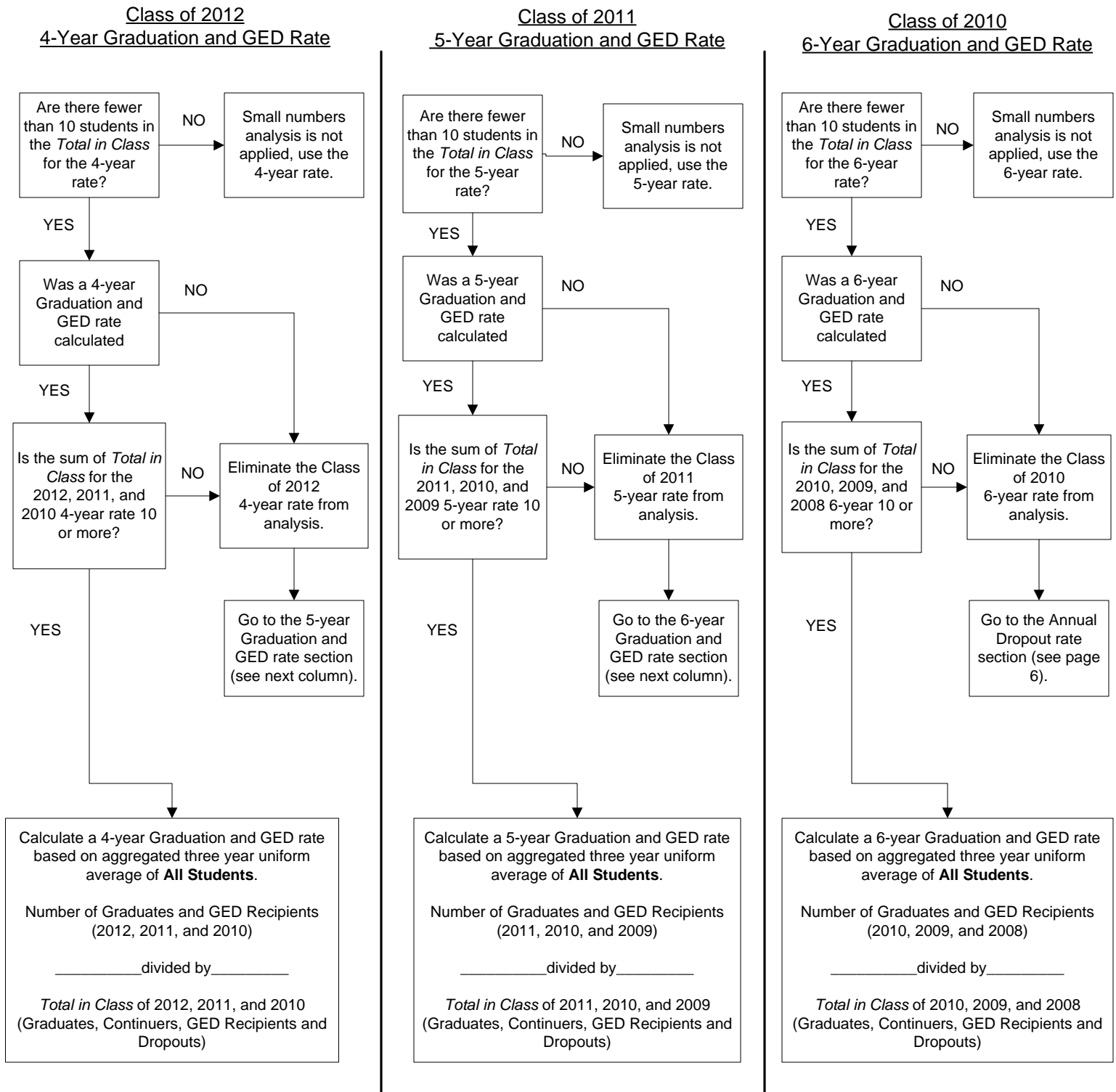
Graduation Rate: Small numbers analysis is applied to the **All Students** student group if the *Total in Class* for the 4-year (Class of 2012) or 5-year (Class of 2011) is fewer than 10 students.



Small Numbers Analysis Index 4: Postsecondary Readiness

AEA DISTRICTS AND CAMPUSES

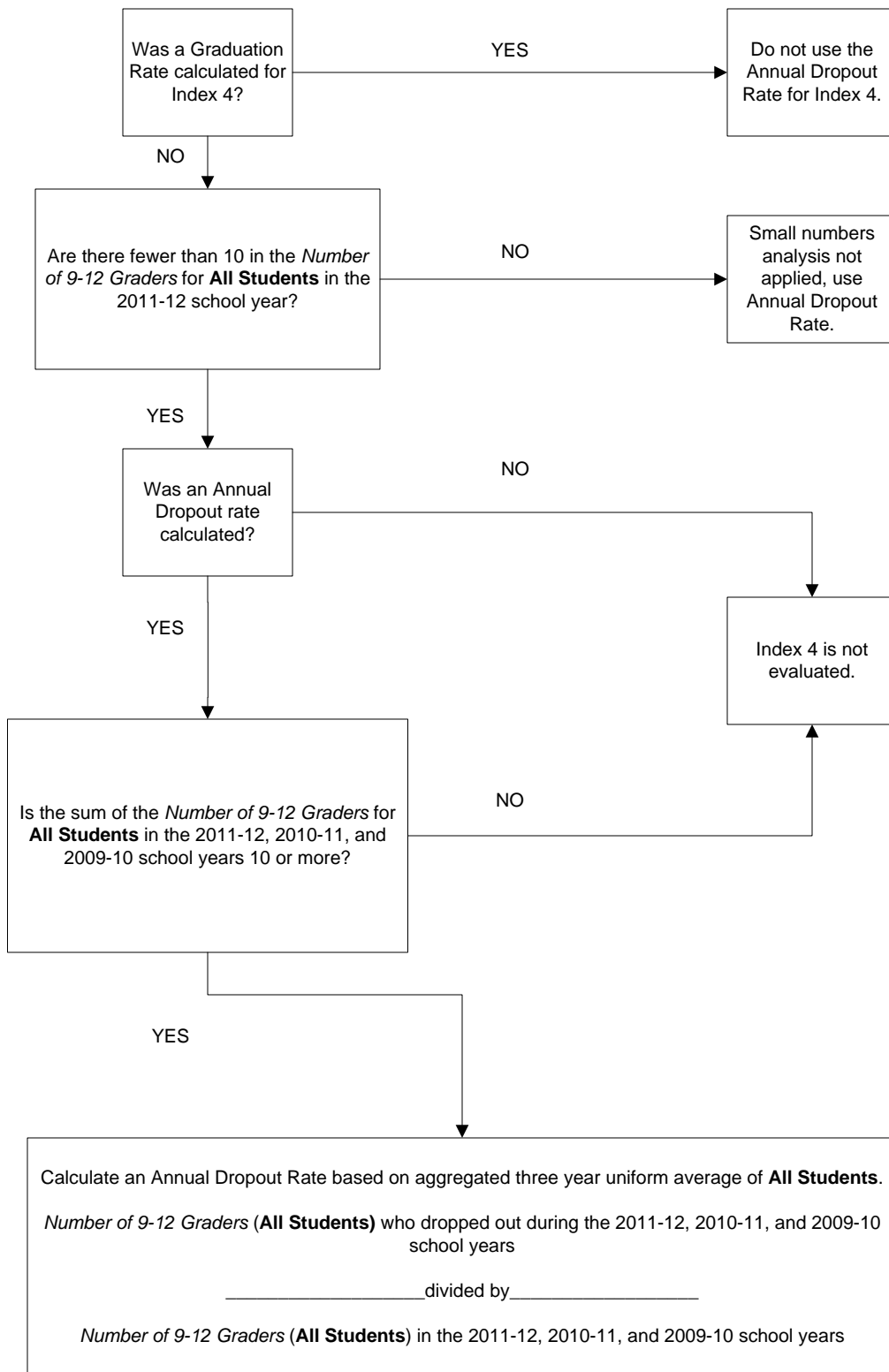
Graduation and GED Rate: Small numbers analysis is applied to the **All Students** student group if the *Total in Class* for the 4-year (Class of 2012), 5-year (Class of 2011), or 6-year (Class of 2010) is fewer than 10 students. AEA campuses use Graduation and GED rates for Index 4.



Small Numbers Analysis Index 4: Postsecondary Readiness

ALL DISTRICT AND CAMPUS TYPES

Annual Dropout Rate (Gr 9-12): Small numbers analysis is applied to the **All Students** student group if the *Number of 9-12 Graders* in the 2011-12 school year is fewer than 10 and **if no Graduation Rate is calculated.**



Small Numbers Analysis

Index 4: Postsecondary Readiness

ALL DISTRICT AND CAMPUS TYPES

Recommended High School Program/Distinguished Achievement High School Program (RHSP/DAP) Annual Rates: Small numbers analysis is applied to the **All Students** student group if the *Number of Total Graduates* in the Classes of 2012, 2011, and 2010 is fewer than 10.

